

Newsletter February 2023

Kia ora tātau

Transfer to Tairangi Primary School

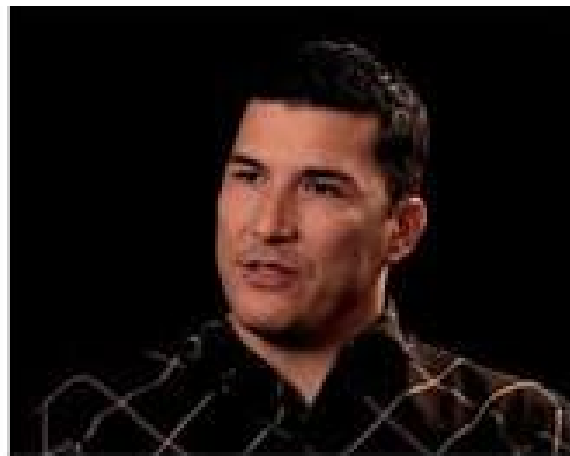
The process to transfer the employment of RTLB and administration staff from Mairehau Primary School in Christchurch to Tairangi Primary School in Porirua East has been completed. We are very grateful to the Board of Trustees of Tairangi School and to Jason Ataera, our new lead school principal for their willingness to employ our team. We look forward to working with Jason and the board on how we can continue to strengthen our service delivery to our schools.

Following is a message from Jason:

Ko Tapu ae o Uenuku toku maunga
Ko Wairau toku awa
Ko Kurahaupo toku waka
Ko Rangitane toku iwi
Ko Ngati Mamoe toku hapu
Ko Omaka te marae

Ko Takitumu toku vaka
Ko Ikurangi toku maunga
Ko Kakera toku moana
Ko Ngatangiia toku oire

Ko Jason Miro Ataera toku ingoa
Kia orana koutou



I am the principal of Tairangi School in Porirua East and am stepping down from my role as co-lead of the Porirua East Kahui Ako to take on the role of Lead School Principal of Rtlb Cluster 28.

I have been principal in our village school in Rarotonga for 3 years and a further 5 years principalship here in New Zealand, where I spent most of my teaching career.

What motivates me is "Everything I do will be to co-create a society where we all benefit from the full potential of each other."

After several years on the RTLB funding panel with Warren Rankin, I was then fortunate enough to be on the interview panel where we appointed our current Cluster 28 Manager Lianne Kalivati.

While I am still learning my role, I see it as essential to maintain role clarity, supporting Lianne to drive our Cluster 28 through ongoing cycles of growth and not lead over top of her. With this in mind, I hope to network and meet all our RTLB Cluster 28 staff and cluster school principals over time and encourage you to use your normal channels for raising issues; first with the people directly involved, then their practice leader and finally with Lianne directly. I should only ever become involved when this process has been followed and a resolution has not been agreed to. This, may or may not have an impact on any decisions or findings.

Finally, you may recall schools were asked for input on the funding provided by our cluster to schools. Since then MOE has initiated a review of how all additional funding is provided and Lianne has provided

our feedback into that review. We are not anticipating any further action in this space until that review is complete.

Bereavement

We are very sad to let you know that our dear friend and colleague Lisa Bagley passed away on 4 January 2023. Lisa was an RTLB for around 13 years who worked in many of our schools, positively influencing the practice of scores of teachers and outcomes for students over that period. Lisa's calm presence and expertise will be sorely missed.

Staff Changes

At the end of 2022 we farewelled Tamati Ratapu and Marilyn Sullivan. Although Tamati was with our team for less than a year we learned from his expertise in engaging with Māori whānau and mokopuna. Marilyn's considerable strengths and experience with behaviour, learning and relationship building with teachers, whānau and other agencies will be very much missed.

We are delighted to welcome Nicky Comerford, Susan Fa'alogo and Denise Turner to our team this year. In 2022 Nicky was an Ed Psych Intern who worked alongside our RTLB; Susan was a Deputy Principal at Porirua School and a trained RTLB; and Denise was a Learning Support Coordinator in the Horokiwi Cluster. We are very fortunate to have their skill sets to strengthen our team's capability.

RTLB Only Day

On Tuesday 31 January, RTLB Cluster 28 joined with Cluster 27 (Upper Hutt/Wairarapa) at Ngā Hau e Whā o Paparāangi Mārae in Newlands for a day's professional development on Mana Potential with Angeline McDonald. It was a wonderful day, where we acknowledged the passing of our colleague Lisa, welcomed new staff, and networked with our colleagues from another cluster. Angeline introduced us to a tool that employs a culturally centred framework to undertake a strengths-based conversation that explores who we are, where we come from, our sources of strength and resources, and how we face life's challenges.



RTLB Learning Support Funding

As Jason mentioned, the Ministry is currently surveying schools on their proposal for how schools are resourced for teacher aides. An Education Sector Reference Group (SRG) has been leading the review and has developed a proposal with recommendations on improvements to the teacher aide resourcing model. Consultation materials and more information about the proposal can be found [here](#). Feedback is requested through an [online survey](#).

The SRG will reconvene in May and use the consultation feedback to inform whether any changes are made to the proposal. They will then submit their final recommended proposal to the Accord Governance Group and the Minister of Education to consider in mid-2023.

You might remember we consulted you in August 2021 on how we could improve the way we make RTLB Learning Support Funding available to our schools. I have submitted a collation of your feedback to the SRG as part of their consultation.

Jason Ataera has agreed the Cluster will continue with our current process to access funding that involves RTLB applying for funding for 2023 while the consultation continues.

Big Wednesday

Big Wednesday dates for Term 1 are: 8 February (passed), 1 March and 22 March.

Requests for support must be submitted by 5pm on Big Wednesday so they can be discussed and allocated (if there is capacity) at team meetings the following week.

Applications for RTLB Funding also need to be made by RTLB by Big Wednesday in preparation for the Funding Committee to meet the following week.

If you have any questions about the content of this newsletter, or about the RTLB service in general, please contact me. We encourage you to share your positive experiences of working with members of our team.

Lianne
RTLB Cluster Manager
Lianne.Kalivati@wellingtonrtlb.school.nz
Ph. 0274191691